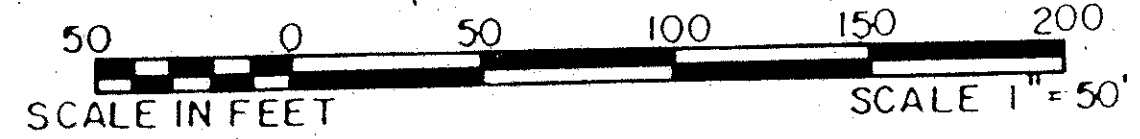


LAKEFIELD OF THE LANDINGS AT WELLINGTON P.U.D. - PLAT 3B

IN PART OF SECTION 7, TOWNSHIP 44 SOUTH, RANGE 41 EAST
PALM BEACH COUNTY, FLORIDA
IN FIVE SHEETS SHEET NO. 2

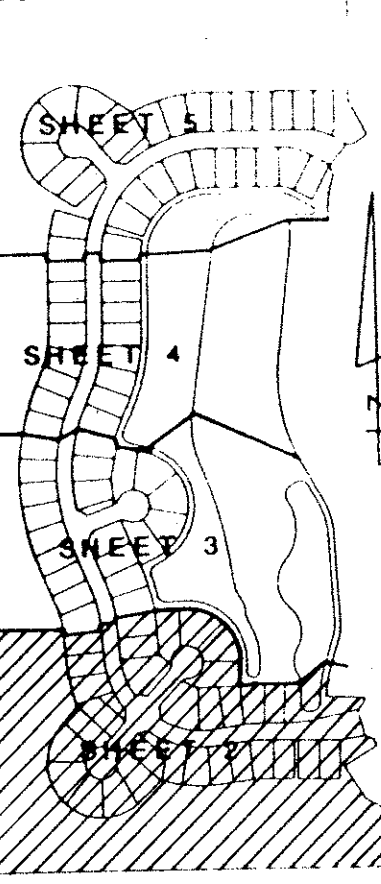
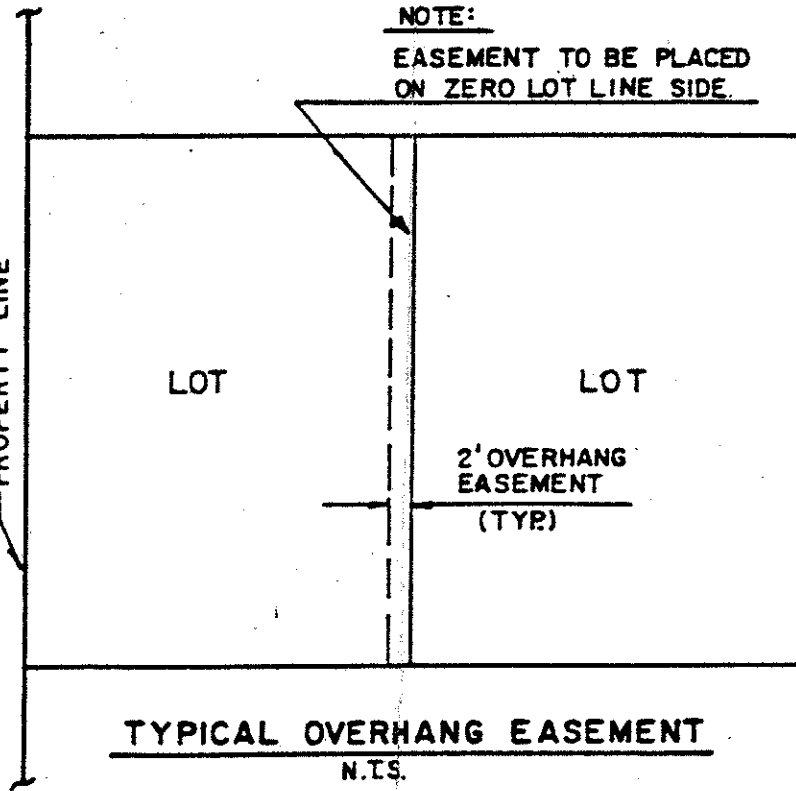
GEE & JENSON
ENGINEERS - ARCHITECTS - PLANNERS, INC.
WEST PALM BEACH, FLORIDA
AUGUST 1988

39



STATE OF FLORIDA
COUNTY OF PALM BEACH
This plat was filed for
record at _____ M. this _____ day
of _____ 1988, and duly
recorded in Plat Book No. _____
on Pages _____.

JOHN B. DUNKLE
Clark Circuit Court
By: _____ D.C.



Lakefield of the Landings
Subdivision of Wellington P.U.D. Plat 3B
BOOK 43 PAGE 39
FLOOD ZONE B
GUARD 77
TAZ 727
PUD NAME S. 3414

COMPUTED D.W.L./E.A.P.
DRAWN D.W.L./E.A.P.
CHECKED J.H.D.
APPROVED _____
REVISION _____

NOTE: ALL LINES ARE NON-RADIAL UNLESS OTHERWISE NOTED !

* - INDICATES ZERO LOT-LINE
WATER MANAGEMENT TRACTS ARE THE PERPETUAL MAINTENANCE TRACTS OF THE LAKEFIELD OF THE LANDINGS AT WELLINGTON P.U.D. AS DEVELOPED BY GEE & JENSON ENGINEERS - ARCHITECTS - PLANNERS, INC.

LAKEFIELD OF THE LANDINGS AT WELLINGTON - PLAT 3B

0269-007
Pet. 78-287

63/39